

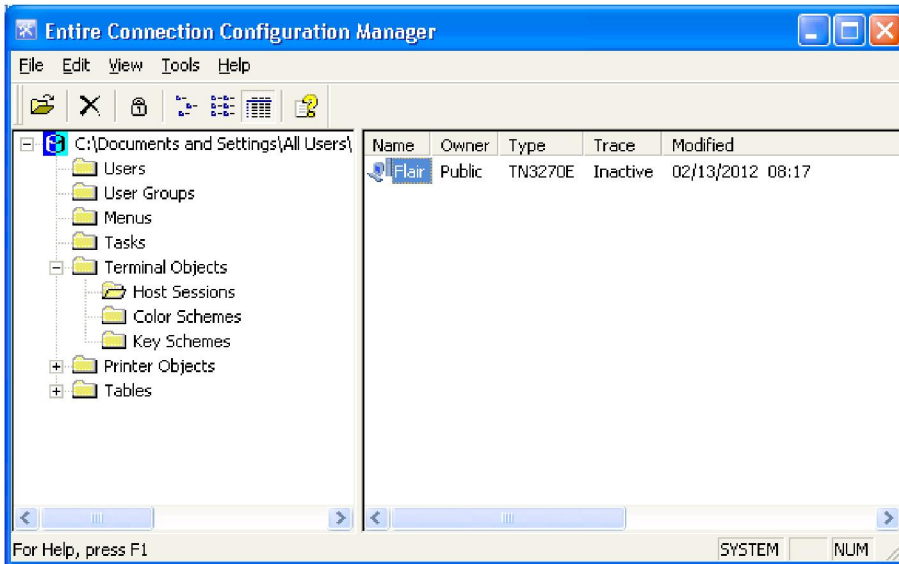
Instructions for Entire Connection Encryption

You will need Entire Connection Version 4.4.1 or above to use terminal encryption. If you are using an older version contact the vendor, Software AG, to upgrade your software.

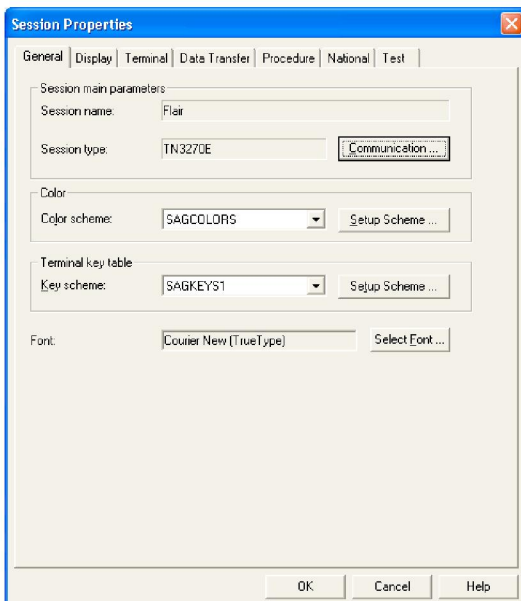
To enable encryption for accessing the FLAIR system:

In Microsoft Windows go to Start | Programs | Software AG Entire Connection | Configuration Manager

Within the Configuration Manager under Terminal Objects your host session will be listed. Right click on the Host Session (in this example it's called 'Flair') and choose 'Modify'.

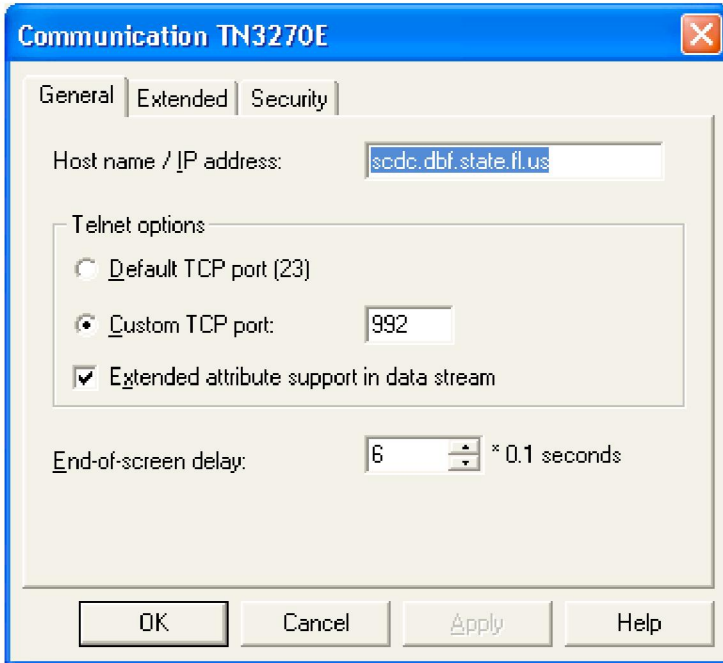


Click the 'Communication' button.

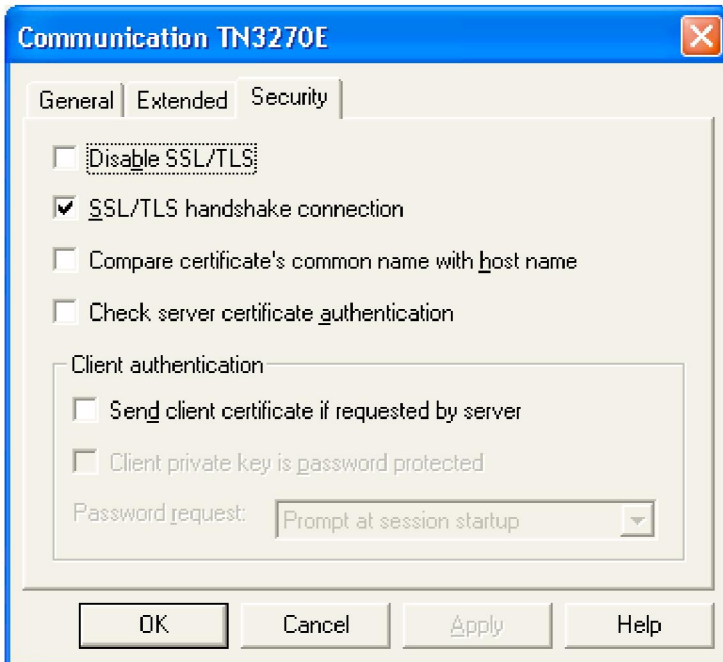


Instructions for Entire Connection Encryption

Verify the host name is `scdc.dbf.state.fl.us` and change the port number to 992.



Select the Security tab and turn on the checkmark for SSL/TLS:



Click OK, OK, and close the Configuration Manager.

The next time you open your Entire Connection terminal session it will be using encryption.